

SmartTE

Modernized Terminal Emulation Solutions

THE NEW FACE OF TE

Terminal emulation remains the most implemented application deployed on ruggedized mobile devices because it is incredibly reliable and incredibly fast. In fact, it is estimated that 70% of ruggedized mobile devices run a terminal emulation solution. But for today's smartphone operating system, touchscreen devices the market is demanding a graphically rich and familiar user experience

Various attempts to use web-based applications have proven to introduce latency—slowing down the application and degrading productivity. Inserting fat applications between the mainframe application and the mobile device to improve the user interface has the same negative impact. Replacing the mainframe application (and the most reliable piece of hardware in the enterprise) with an entirely new system brings with it exorbitant costs and a high level of risk.

When it comes to the all-important workforce metric—productivity—nothing has been able to beat terminal emulation's combination of speed and reliability.

Customers have had to choose between the speed of terminal emulation and the intuitive, graphical UI of browser-based or fat applications until now:

StayLinked SmartTE delivers the speed and reliability of traditional terminal emulation with the intuitive, modern user experience of web-based applications.

By introducing new intelligence to the terminal emulation process on the host system, the emulation screens can be intercepted before they are sent to the wireless device, and the elements of the green screen can be overwritten by a rich graphic interface that is familiar and easy-to-use to the mobile user.



StayLinked SmartTE takes traditional terminal emulation to new heights with touch screen capabilities and rich graphics.

This new server-side intelligence can recognize emulation screens, determining the kind of input that is being requested, and present an appropriate virtual keyboard on the device—everything from a standard full keypad to a numbered key pad when numbers are requested, for instance, or a range of limited options when that is appropriate. If the response is a simple yes or no, two buttons can be made to appear.

With StayLinked SmartTE your text-based "green screen" applications are quickly transformed into easy-to-understand, graphical screens with no changes to the original application and no programming skills required.

BENEFITS

Increased Productivity – Transforming complicated, text-based application screens to easy-to-use, graphics-based screens can eliminate steps for application end users and increase overall worker efficiency.

Rapid Training – An application that looks and feels like the Android or iOS application new workers use on their personal mobile phones will be much easier to learn and understand. This is especially true when training seasonal or temporary workers.

Increased Employee Morale – SmartTE is the highest performance solution of its kind and is incredibly reliable. This allows employees to excel and become a top performer potentially earning recognition from management. Performance barriers inherent to web-based and fat apps are removed.

Investment Protection – Your SmartTE client runs across operating systems (i.e. Android, iOS, Win 8.1) from many vendors AND the license is fully transferable to other devices.

Features of Terminal Emulation for the Smartphone Generation

No Changes to your existing application – Screens are dynamically transformed. Administrators can then fine-tune the screens as necessary.

No programming required – Administrators can edit dynamically generated screens through the Integrated screen designer.

Rich, graphical screens – End users see a familiar user interface supporting such actions as swipe, pinch, buttons, fields and more.

Auto-device detection – upon installation, the SmartTE client will adapt itself to the specific device's unique capabilities.

Ultra fast performance – SmartTE delivers StayLinked's industry-best application speed.

Rapid Implementation – Dynamically generate screens, test, and implement in a matter of weeks.

Full support of IBM and VT applications – 3270, 5250, VT100, VT220

Support for Android, iOS, and Windows – SmartTE supports multiple smart operating systems from a vast array of device manufacturers.

No Dropped Connections – SmartTE's unique architecture ensures telnet sessions are never dropped, even when devices are re-booted, its battery dies, or the user roams between WIFI and cellular networks.

Strongest Security in the market - StayLinked delivers the most secure Terminal Emulation solution available with SSHv2, Blowfish encryption, firewall-friendly design, application lock-down, and port filtering.

STAYLINKED ULTRA-THIN CLIENT

The thin client communicates with the host-resident StayLinked server to communicate keystrokes and scans to the emulation session and then to your application, and transmits only net changes to the emulation screen back to the wireless device. Think of it as the mobile device running a remote control session of the telnet/SSH session running on the host computer.

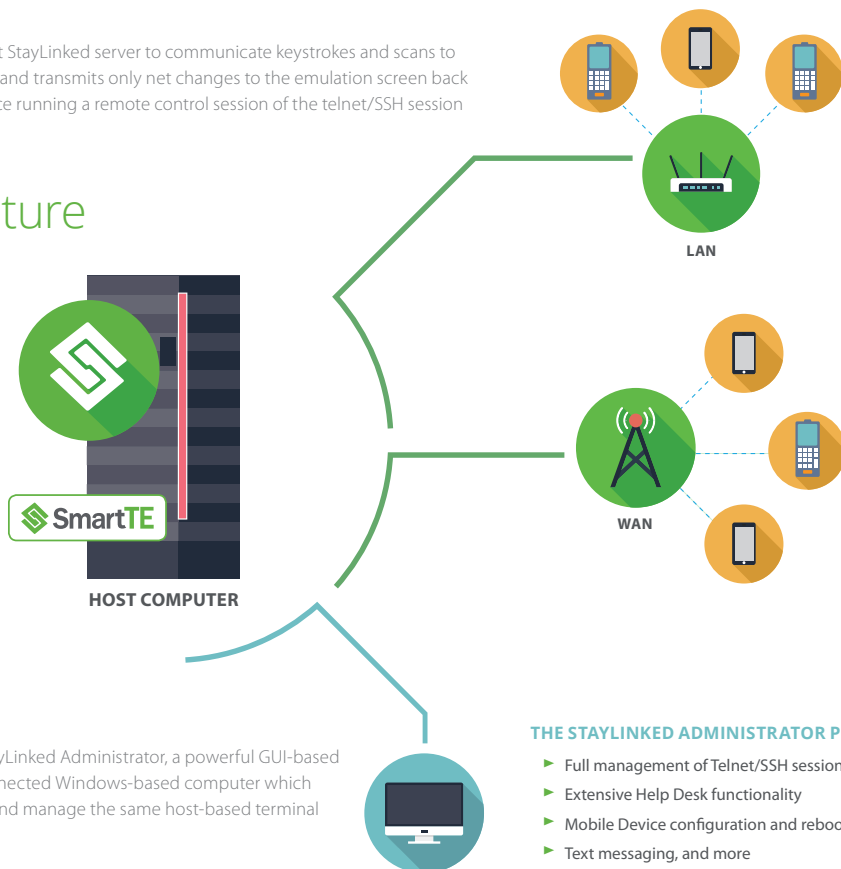
StayLinked Architecture

STAYLINKED SERVER

The StayLinked server runs all telnet sessions on the same server as the host system. This results in the telnet sessions achieving the same reliability as the host computer, after greater than 99.9% uptime.

SmartTE

Dynamically modernized screens with increased ease-of-use and end-user productivity.



STAYLINKED ADMINISTRATOR

An integral part of the StayLinked solution is the StayLinked Administrator, a powerful GUI-based console which can be installed on any network-connected Windows-based computer which can access the password-protected Administrator, and manage the same host-based terminal sessions the end user is seeing on his screen.

THE STAYLINKED ADMINISTRATOR PROVIDES:

- ▶ Full management of Telnet/SSH sessions
- ▶ Extensive Help Desk functionality
- ▶ Mobile Device configuration and reboot
- ▶ Text messaging, and more

ABOUT STAYLINKED

For over 20 years we have been delivering world-class solutions for mission-critical, host-based systems in the warehousing, manufacturing, transportation, and retail industries. It was our deep understanding of these host-based systems that led our team of technology experts to introduce a new paradigm in terminal emulation for mobile devices. The StayLinked team has earned our company a reputation for high-quality products that Just Work and a level of customer support that creates the highest level of customer loyalty.

Copyright © 2018 StayLinked Corporation.
SL-1014.JC/JP